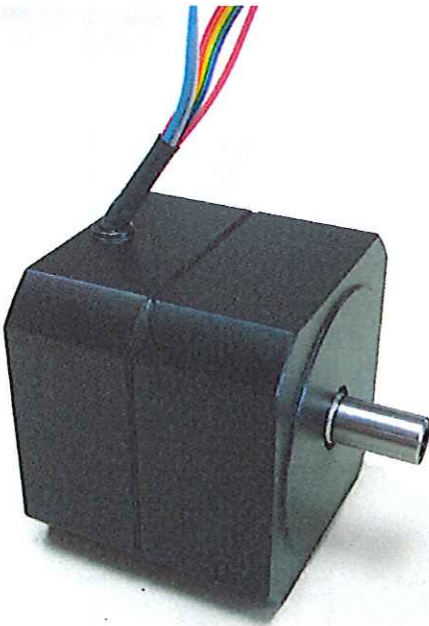
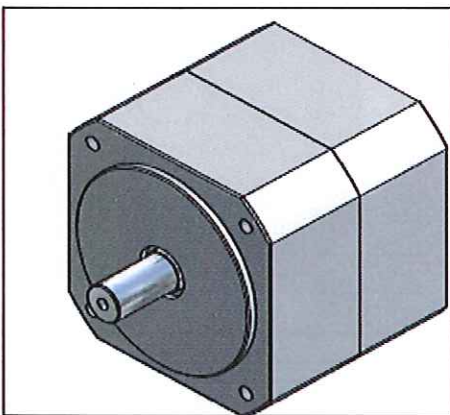


NEW

BC series



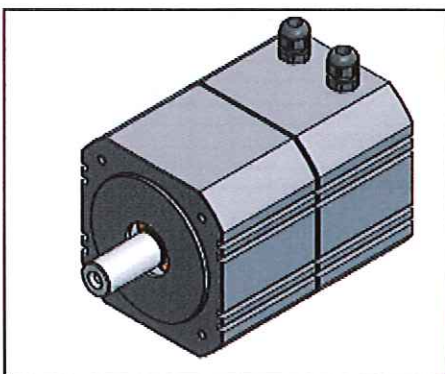
- * Compact size
- * Light
- * High speed and high torque in small dimensions
- * Hall sensor included
- * Robust



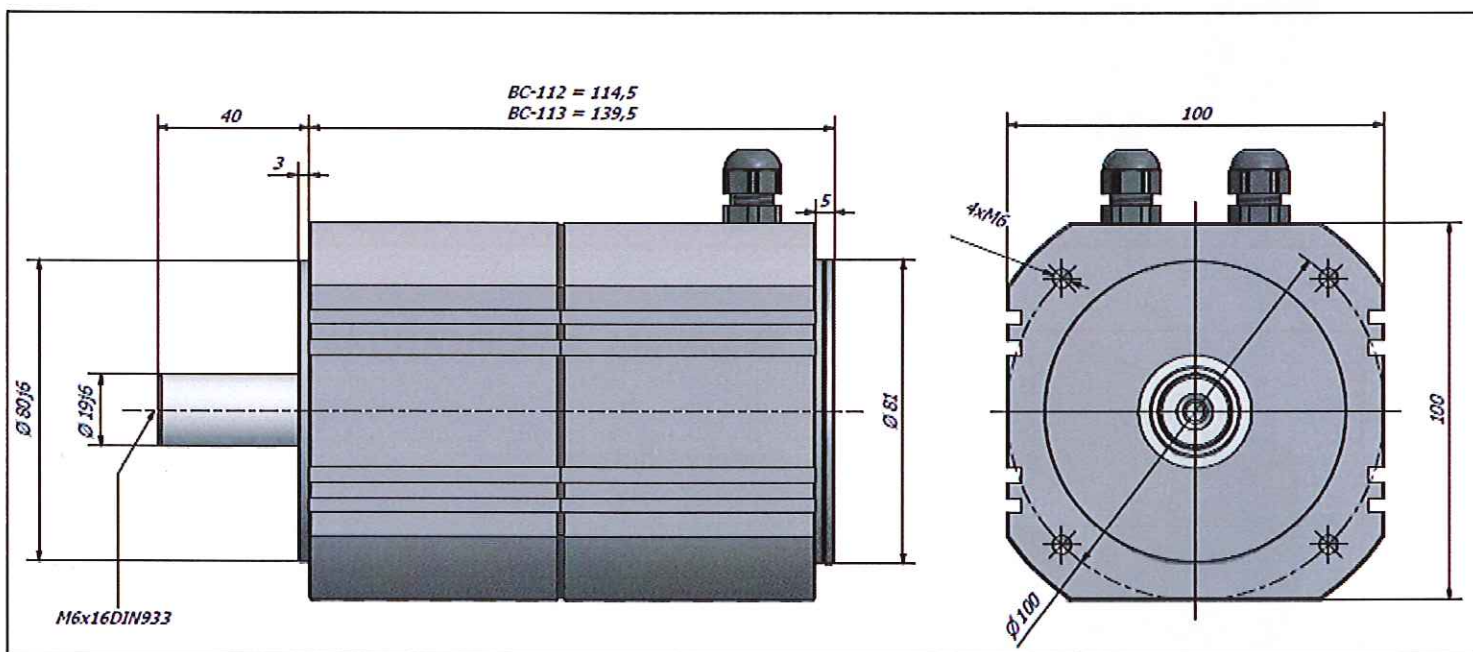
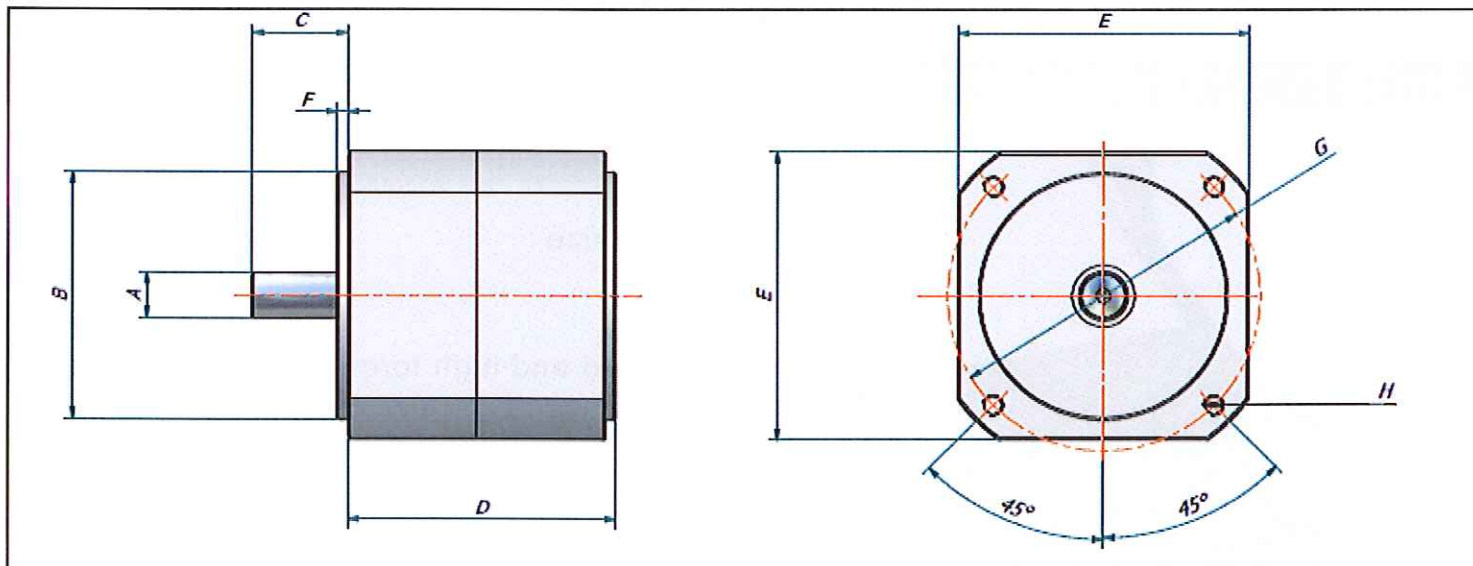
TECHNICAL SPECIFICATIONS HALL SENSORS

SUPPLY VOLTAGE	3.8...24VDC
OUTPUT ON CURRENT	20 mA
OUTPUT OFF VOLTAGE	3.8...24VDC
OPERATING JUNCTION TEMPERATURE	-40°C to +170°C
OUTPUT RISE TIME	400 ns (Max.)
OUTPUT FALL TIME	400 ns (Max.)
MAGNETIC FIELD FREQUENCY	from DC to 10kHz

EMC corresponding to DIN 40839



DRAWING



CHARACTERISTICS	SYMBOL	UNITS	BC-53	BC-71	BC-72	BC-73
Maximal speed at 200VAC	<i>n_m</i>	rpm	12000	11000	11000	11000
Stall torque (+/- 10%)	<i>M_s</i>	Nm	0,35	0,8	1,7	2,25
Stall current (+/- 10%)	<i>I_s</i>	A	1	2,1	3,5	3,26
Peak torque	<i>M_j</i>	Nm	1,6	3,2	7,6	10,4
EMF constant	<i>K_e</i>	Vs/rad	0,2	0,22	0,28	0,4
Torque constant	<i>K_t</i>	Nm/A	0,35	0,38	0,48	0,69
Winding resistance	<i>R</i>	Ohm	11,6	10,7	5,3	6,4
Winding inductance	<i>L</i>	mH	11	7,4	5,4	6,4
Inertia	<i>J</i>	kgm ² 10 ⁻³	0,008	0,026	0,05	0,07
Shaft diameter	<i>A</i>	mm	9	11	11	11
Flange centering diameter	<i>B</i>	mm	50j6	60j6	60j6	60j6
Output shaft length	<i>C</i>	mm	20	23	23	23
Motor length	<i>D</i>	mm	73,5	47	65	83
Size	<i>E</i>	mm	57	70	70	70
Centering flange depth	<i>F</i>	mm	2,5	2,5	2,5	2,5
Fixing diameter	<i>G</i>	mm	65	75	75	75
Fixing screws	<i>H</i>	mm	4xM5	4xM5	4xM5	4xM5

CHARACTERISTICS	SYMBOL	UNITS	BC-112	BC-113
Maximal speed at 200VAC	<i>n_m</i>	rpm	8500	8500
Stall torque (+/- 10%)	<i>M_s</i>	Nm	4,5	7
Stall current (+/- 10%)	<i>I_s</i>	A	5,4	8,23
Peak torque	<i>M_j</i>	Nm	20	33,6
EMF constant	<i>K_e</i>	Vs/rad	0,48	,49
Torque constant	<i>K_t</i>	Nm/A	0,83	,85
Winding resistance	<i>R</i>	Ohm	2,4	1,3
Winding inductance	<i>L</i>	mH	4,8	2,7
Inertia	<i>J</i>	kgm ² 10 ⁻³	0,37	0,56